

# Fenn's, Whixall and Bettisfield Mosses NNR

## Accessibility Statement

Fenn's, Whixall and Bettisfield Mosses NNR is a 2000-acre lowland raised peat bog, straddling the English-Welsh border. With wide open spaces, it hosts much rare wildlife.

The reserve consists of:

- A bird hide overlooking wetlands
- A number of public rights of way and waymarked trails. Please telephone the Manor house NNR Base for advice regarding paths and trails.
- A disused railway line, running through the northwest edge of the nature reserve, which visitors can drive along. The key can be borrowed by arrangement from the office during office working hours (except bank holidays)
- A viewing tower just off the canal towpath
- Manor House NNR Base including car parking, toilets and hand wash facilities.

Most of the tracks are uneven and grassy, but without inclines. Due to the nature of the site, they are often wet and muddy.

Mobile reception can be patchy. The office at the Manor House Base is normally staffed 8:30am – 4:30 pm Monday to Friday (excluding bank holidays). Staff can usually be reached on **01948 880362** and there is an answerphone if no one is available to answer. **In case of an emergency call 999.**

Lots of the areas of the mosses are exposed to the elements. It can be cold and windy during the winter months and hot and sunny with little shade and biting insects during the summer.

Assistance dogs are welcome on all footpaths/trails across the reserve. Bird breeding season runs from 1<sup>st</sup> of March to the 1<sup>st</sup> of August and we ask that all dogs to be kept on leads and members of the public keep to the designated routes for the benefit of the bird population. Non-assistance dogs are to be always kept on a short lead on the NNR trails and under close control on public footpaths. These routes are marked with signage.

Some access points are through narrow squeeze gates or kissing gates.

This accessibility statement aims to lay out where the accessible facilities are and detail their information, so visitors can make informed decisions before visiting the site.

For any queries, please call **01948 880362**.

## **Manor House NNR Base**

**[What3words ///composes.intent.deriving](#)**

**[Postcode SY13 2PD](#)**

The Manor House NNR Base is the central site of staff operations. When open, an accessible toilet is available, and staff are on hand to answer any questions or direct you onto a route.



## **Directions**

From the McDonald's and Starbucks Roundabout on the A41 Whitchurch Bypass take the A525.

After 1.0 mile, turn left onto the A495 (Ellesmere)

Turn left, following the brown sign for Fenn's, Whixall and Bettisfield Moss NNR.

Continue down Fenn's Bank Road until the road turns left, with a right-hand turn. **[What3words/// ///responses.escorting.influence](#)**



On this corner, there is a post box, a white sign, and a brown sign. Follow the white sign to the right saying, “Manor House NNR Base”.

Follow this road and turn right into the base.



## **Parking at The Manor House NNR Base**

**What3words**

**///composes.intent.deriving**

**Postcode SY13 2PD**

There are two level hardstanding parking bays designated for disabled visitors (below), approximately 1-5m away from the ramp to the classroom.



## Classroom and NNR Office



The classroom and office have a ramped access from the disabled parking bays.

The door to the classroom opens inwards to the left. The door is 845mm wide and has a lip measuring 45mm high from the external paving. This lip is 25mm high from the internal floor.

The classroom and office have flat vinyl floors, and within the classroom there are tables and several hard-back chairs with no arm rests. There is natural light, with windows and overhead fluorescent strip lights.

The classroom can also be accessed from the office via an internal door. The external door to the office is 900mm wide and has a 35mm lip. From here there is a hallway to the classroom which is 710mm wide at its thinnest point.





## **Accessible Toilet**

**Open when staff are present, weekdays 8:30am – 4:30pm not including bank holiday.**

**We apologise, but we cannot guarantee staff presence at any time at the base, as they are often working out on the site. We therefore cannot guarantee the toilets will be open.**

**Please call ahead; 01948 880362**

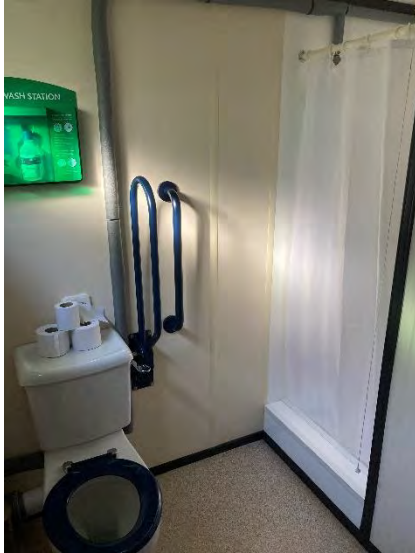
There is one accessible toilet accessed from the classroom at the Manor House Base. The toilet door opens outwards to the right and swings shut after you. The doorframe is 890mm wide.

There is a pull-cord light on the left as you enter.

The room is 2130mm x 1480mm. There is a space to park a wheelchair to the left-hand side of the toilet as sat.

There are transfer handles on both left and right of the toilet and sink. The toilet seat is 420mm high. The sink is 690mm high. The side rail drops to 690mm off the ground. There is an emergency alarm pull cord on the right-hand side of the toilet as sat which runs to floor.





There is also a paper towel dispenser and a bin.

There is a shower cubicle with a shower curtain to the left of the toilet as sat.

There is an overhead fluorescent strip light and a small window allowing some natural light.

### **Fenn's Moss Disused Railway Line Drive**

Visitors with access needs can arrange to borrow a key for the gates and drive along the disused railway line for a panoramic view of the moss and the Old Peat Works. You can access the railway line from both side of the Moss.

There are two benches along the route and two parking bays which visitors can pull into.

The railway line surface is compacted stone which can be loose at times and potholes can develop along here.



***Please call ahead to borrow a key and for detailed directions Monday to Friday 8.30am – 4.30pm excluding bank holidays.***

01948 880362

***Or email: [info.whixall@naturalengland.org.uk](mailto:info.whixall@naturalengland.org.uk)***

**Directions to the Railway Line**

**Note:** Please always drive slowly along the line. Please leave all gates as you find them.

**There are two entrances to the railway line:**

**Bettisfield end – [What3words///companies.doors.decanter](#)**

**Directions from A41 Whitchurch Bypass**

1. From the McDonald's and Starbucks Roundabout on the A41 Whitchurch Bypass take the A525.
2. After 1 mile turn left onto the A495 for Ellesmere/Oswestry.
3. After 4.3 miles take a left, sign posted Bettisfield/Wem. Be careful, the turning is on a right-hand bend.
4. After 0.8 miles, you go past a church on your right and then you will see a bridge in front of you.
5. Go over the bridge and immediately turn right. The converted old station is on your right.
6. Follow the track and keep going under the bridge.
7. Keep going along the track and you will come to the gates into the Reserve.
8. Pass through the gates to the reserve.

**Conery Lane end - [What3words\(/////responses.bolt.bitters\)](#)**

**Directions from the A41 Whitchurch Bypass**

1. From the McDonald's and Starbucks Roundabout on the A41 Whitchurch Bypass take the A525.
2. After 1.0 mile, turn left onto the A495 (Ellesmere)
3. After 1.1 miles after a long straight, you will see an open area on your left.
4. Turn onto this open area.
5. The sign for Conery Lane will be in front of you.
6. Continue down Conery Lane and follow the track round to the left.
7. Continue through the gates onto the reserve.

**Morris's Bridge Carpark**

**[What3words ///measure.ranted.exits](#)**



## Postcode SY13 2RY

Morris's Bridge Carpark is the starting point to the Mammoth Tower Trail (formerly known as the Easy Access Trail) from which you can walk along the canal and reach the Mammoth Tower. You can also access viewfinders which are a part of the Green Mosses Trail which requires walking to the old scrapyard and then back out onto the moss.

There are 3 designated disabled parking bays. There is a picnic bench with space for a wheelchair. The ground surface is compacted stone, with an inclined ramp towards the canal towpath. This ramp is the start of the Mammoth Tower Trail.



### **Finding Morris's Bridge Carpark**

1. From the McDonald's and Starbucks Roundabout on the A41 Whitchurch Bypass take the A525.
2. After 1.0 mile, turn left onto the A495 (Ellesmere)
3. After 0.8 mile turn left following the NNR brown sign
4. After 2.4 miles, go past the turning on the right for Natural England's Offices.
5. Follow the road, go over a Hump-back canal bridge.
6. After 200 metres, turn right at the crossroads, signposted Fenn's, Whixall and Bettisfield Mosses NNR.
7. After 1.6 miles, turn right, signposted Morris's Bridge.
8. Go over the Cantilever Canal Bridge.
9. The Car Park is on the Left.





## **Whixall Moss Mammoth Tower Trail (formerly known as the Easy Access Trail)**

A wheelchair friendly ramp leads to a level compacted stone towpath along the canal. Some areas are slightly slanted with overhanging trees and there are areas where the surface stone has become loose. In the drier months this path remains well drained but there is potential for water to pool in the wetter winter months.



There are 6 benches along the tow path to the Mammoth tower at regular intervals. The benches have spaces for wheelchairs.

## **Mammoth Tower**

[What3words ///smart.defends.educates](http://www.what3words.com/smart.defends.educates)

The Mammoth Tower is approximately 5m tall providing views of the moss along with interpretation.

The tower is accessible from the canal towpath section of the easy access trail, down a Millboard walkway 119cm wide with tight corners.

The bottom of the Mammoth Tower has a seating area with a view of the Mosses. The top of the viewing tower is only accessible via steps, but there is a periscope to allow wheelchair users to access the view from the ground. The periscope is of a fixed height, with the boardwalk below it measuring 178cm x 144cm.







If the Mammoth Tower Trail is not suitable for your additional need, **The Lyneal Trust** is an organisation which specialises in holidays for people with disabilities and their carers. They offer canal boat trips down the same route as the Mammoth Tower Trail and have a disabled mooring nearby to the Mammoth Tower. For more information, visit:

<https://www.lyneal-trust.org.uk/>



Picnic benches and interpretation panel at the end of the board walk

## Walking Trails

Around the reserve there are public rights of way, including footpaths and bridgeways. In addition to these, there are a number of waymarked permissive trails including the Mosses Trails (3 routes: Green, Orange and Purple colour coding on NNR maps and leaflets), the History Trail and the Bettisfield Moss Trails.



A section of the Green Trail on Whixall Moss

Maps to illustrate the layout of these trails and public rights of way can be found in the NNR leaflets available on site, or on the Marches Mosses Website.

Many of the trails and rights of way are unsurfaced (as in the picture above), have gentle inclines in places, and whilst they can be firm and dry under foot in the drier months, they are potentially wet and boggy in colder wetter months. Wellingtons or sturdy walking boots are strongly advised in the winter.

***Please phone ahead to seek advice regarding routes and to borrow a gate key. Telephone 01948 880362, Monday to Friday 8:30am-4:30pm excluding Bank holidays.***

**Charles Sinker Fields Bird Hide**



[what3words.com/using.enjoys.polite](http://what3words.com/using.enjoys.polite)



The bird hide provides a sheltered area for visitors to look out over the wetlands which is rich with bird life.

It contains 4 benches at varying heights. There are 8 windows, of which two windows are wheelchair friendly. They are at a lower height (915 mm) and have room below to fit chairs and legs, allowing you to get right up to the window, face on.

There is access to the bird hide from two designated disabled visitors parking bays on a smooth surface of compacted fine stone.

There is a metal gate with easy latch gate.

The gate's width is 131cm. This leads to a 14m long hardstanding path with a slight incline.

The bird hide's entrance door is 838mm wide and has a push button lock which **requires a code**. The door opens towards you to the right.

***The code can be obtained by filling out an online form for the following link***



[Shropshire Wildlife Trust bird hide access code application form \(office.com\)](#)

## **The Marlot LNR**

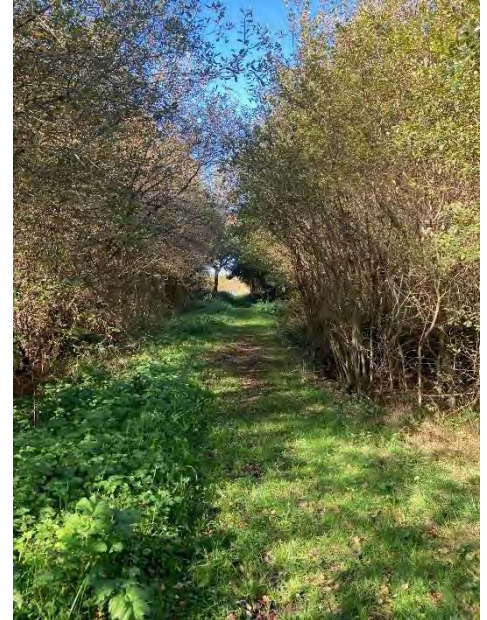
**What3words:///daring.postage.dumplings**

**Postcode SY13 2PH**

The Marlot is a Local Nature Reserve with ponds to the right (through the main gate) leading to a small, wooded area. There are also front and back meadows with seating areas to the left of the entrance.

The terrain can be slightly uneven and muddy in places and access is through a spring bolt latch gate. There are several seating areas.

There is a parking area adjacent to the Marlot LNR. From here, access to the main entrance of the Marlot is via a stoned track, pictured below.



## **Whixhall Marina**

Alders Lane, Whixall, Shropshire, SY12 2QS

## What3words///tell.looms.titles

Telephone: 01948 880701

Whixall Marina is situated on the Press Branch of the Llangollen canal on the edge of Fenn's and Whixall Mosses. The Whixall Marina specialises in holiday hire of canal boats and shepherd's huts.

The waterside café is located within the Whixall Marina complex. The café is open **Monday to Friday 10.00 am – 3.00pm** and offers a selection of food and snacks, cake, and hot drinks.

There are toilets and one disabled toilet via ramp access.

Opening time may vary depending on the season.

---

Thank you to Natural England Volunteers Sarah Lamb and Tim Lamb, and BogLIFE Trainee Fergus Walters for their work in putting this access statement together.

Feedback on this Accessibility Statement is welcome. Please either call or email us using the details below:

01948 880362

[info.whixall@naturalengland.org.uk](mailto:info.whixall@naturalengland.org.uk)

Version 1 - 20.10.2022